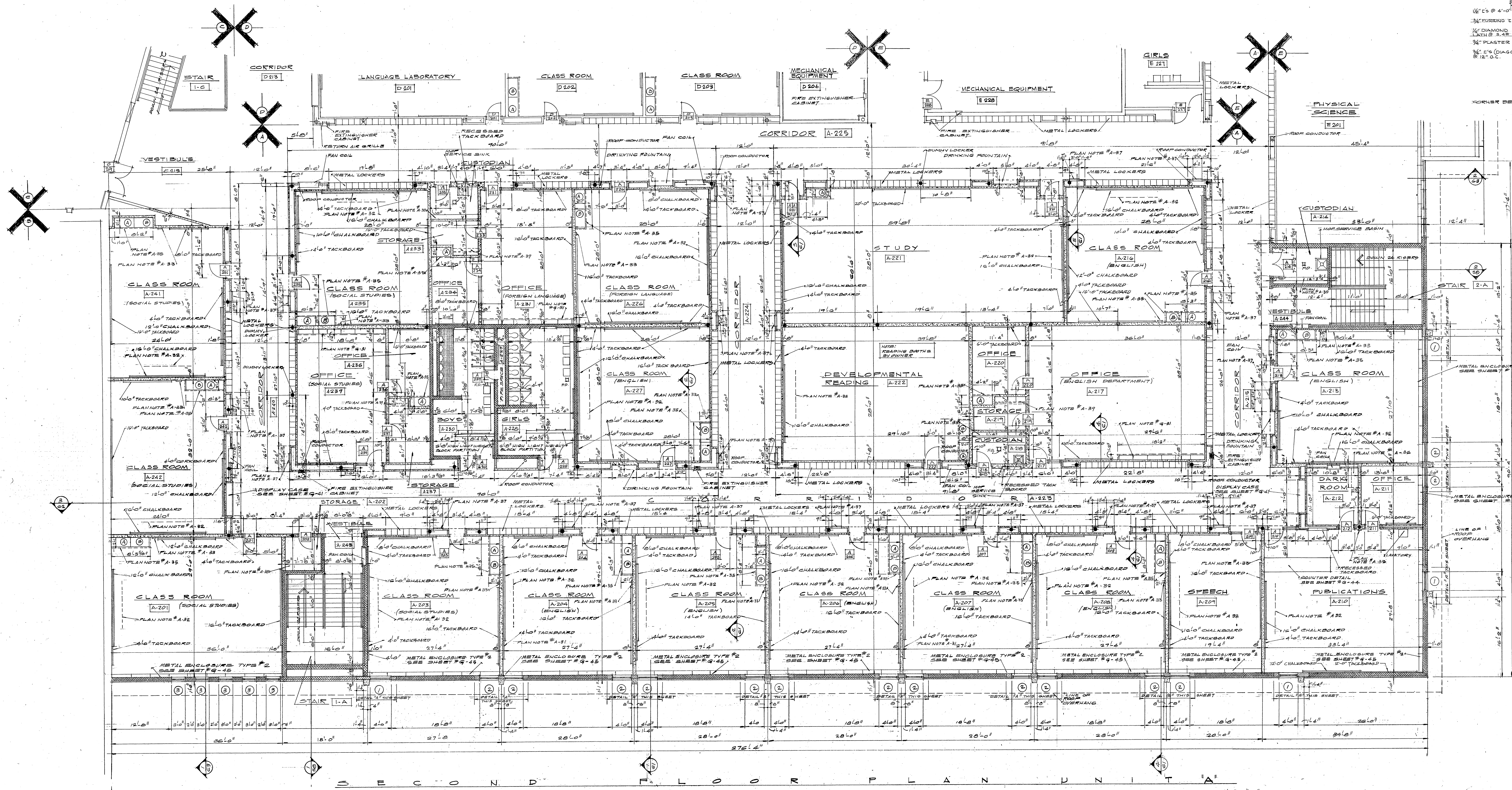
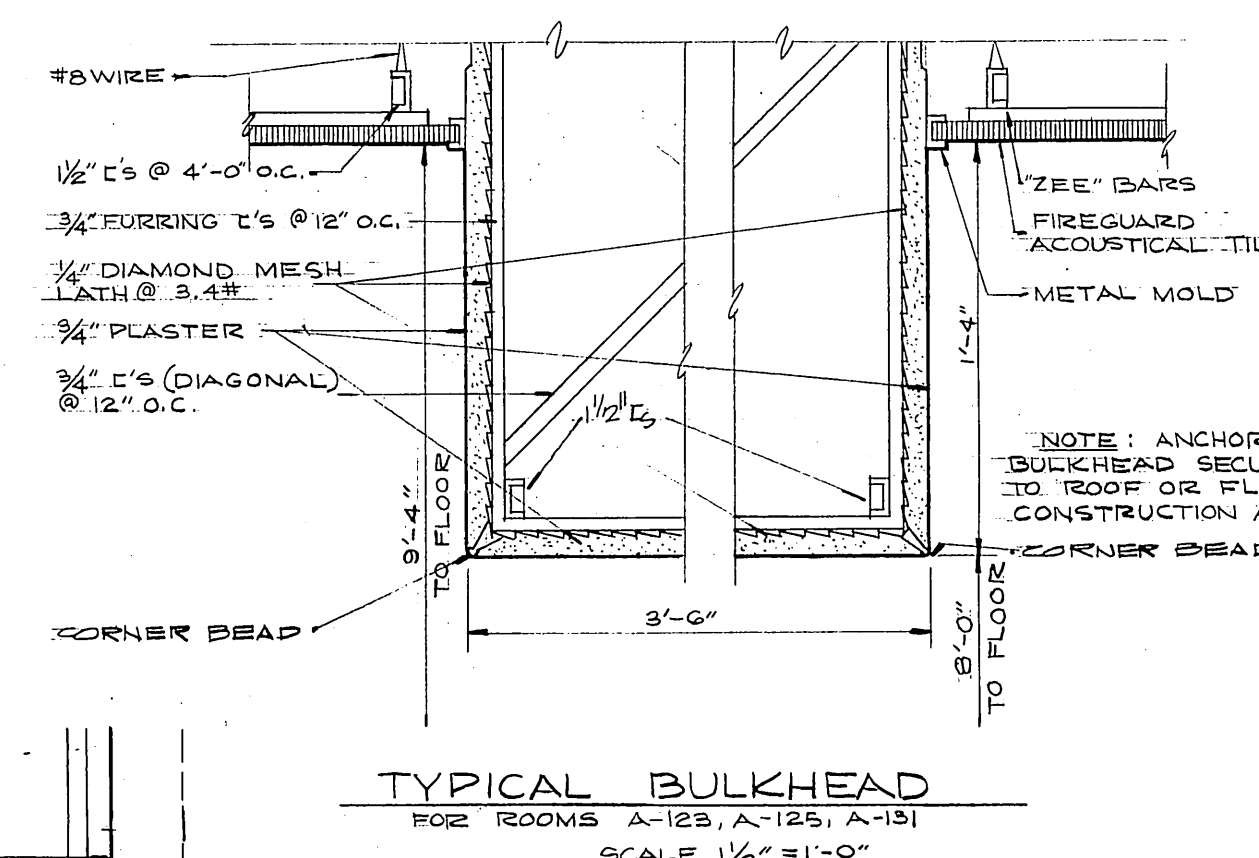
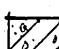

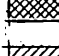
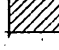

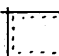
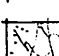

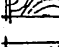
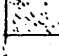


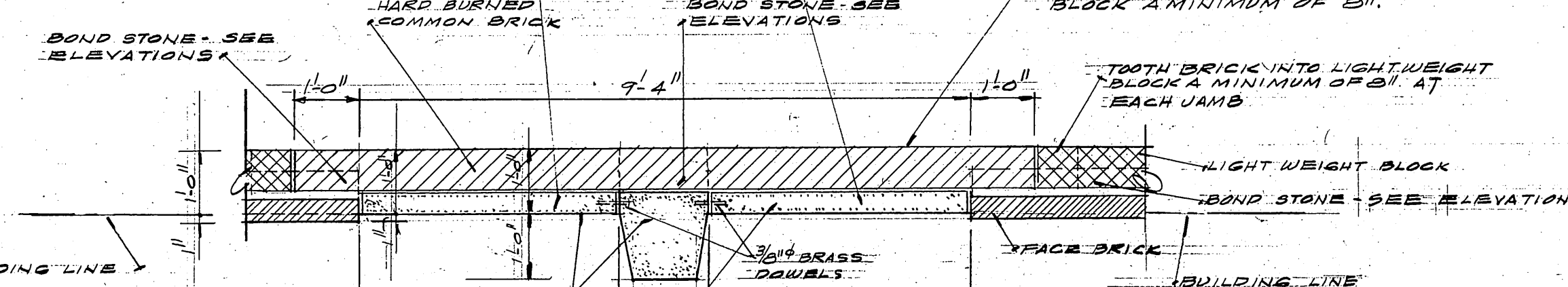


NUMBER	NAME	FINISH FLOOR	BASE	HGT.	WALL COATING				FINISH WALL	CEILING MATERIALS	HGT.	WINDOW STOOD		REMARKS	FABRIC WALL COVERING		NUMBER
					N	S	E	W				W	W		W	W	
A 2 0 1	CLASS ROOM	VINYL ASBESTOS	RUBBER	6'6"	—	—	—	—	PLASTER	ACOUSTICAL TILE	7'4"	—	—	—	YES	YES	A 2 0 1
A 2 0 2	STORAGE	VINYL ASBESTOS	RUBBER	6'6"	—	—	—	—	PLASTER	PLASTER	7'4"	—	—	—	YES	YES	A 2 0 2
A 2 0 3	CLASS ROOM	VINYL ASBESTOS	RUBBER	6'6"	—	—	—	—	PLASTER	ACOUSTICAL TILE	7'4"	—	—	—	YES	YES	A 2 0 3
A 2 0 4	CLASS ROOM	VINYL ASBESTOS	RUBBER	6'6"	—	—	—	—	PLASTER	ACOUSTICAL TILE	7'4"	—	—	—	YES	YES	A 2 0 4
A 2 0 5	CLASS ROOM	VINYL ASBESTOS	RUBBER	6'6"	—	—	—	—	PLASTER	ACOUSTICAL TILE	7'4"	—	—	—	YES	YES	A 2 0 5
A 2 0 6	CLASS ROOM	VINYL ASBESTOS	RUBBER	6'6"	—	—	—	—	PLASTER	ACOUSTICAL TILE	7'4"	—	—	—	YES	YES	A 2 0 6
A 2 0 7	CLASS ROOM	VINYL ASBESTOS	RUBBER	6'6"	—	—	—	—	PLASTER	ACOUSTICAL TILE	7'4"	—	—	—	YES	YES	A 2 0 7
A 2 0 8	CLASS ROOM	VINYL ASBESTOS	RUBBER	6'6"	—	—	—	—	PLASTER	ACOUSTICAL TILE	7'4"	—	—	—	YES	YES	A 2 0 8
A 2 0 9	SPBCH	VINYL ASBESTOS	RUBBER	6'6"	—	—	—	—	PLASTER	ACOUSTICAL TILE	7'4"	—	—	—	YES	YES	A 2 0 9
A 2 1 0	PUBLICATIONS	VINYL ASBESTOS	RUBBER	6'6"	—	—	—	—	PLASTER	ACOUSTICAL TILE	7'4"	—	—	—	YES	YES	A 2 1 0
A 2 1 1	OFFICE	VINYL ASBESTOS	RUBBER	6'6"	—	—	—	—	PLASTER	ACOUSTICAL TILE	7'4"	—	—	—	YES	YES	A 2 1 1
A 2 1 2	DARK ROOM	VINYL ASBESTOS	RUBBER	6'6"	—	—	—	—	PLASTER	ACOUSTICAL TILE	7'4"	—	—	—	YES	YES	A 2 1 2
A 2 1 3	CLASS ROOM	VINYL ASBESTOS	RUBBER	6'6"	—	—	—	—	PLASTER	PLASTER	6'6"	—	—	—	YES	YES	A 2 1 3
A 2 1 4	CUSTODIAN	CONCRETE	RUBBER	6'	—	—	—	—	PLASTER	PLASTER	7'4"	—	—	—	YES	YES	A 2 1 4
A 2 1 5	CORRIDOR	TERAZZO	RUBBER	6'	—	—	—	—	PLASTER	ACOUSTICAL TILE	7'4"	—	—	—	YES	YES	A 2 1 5
A 2 1 6	CLASS ROOM	VINYL ASBESTOS	RUBBER	6'	—	—	—	—	PLASTER	ACOUSTICAL TILE	7'4"	—	—	—	YES	YES	A 2 1 6
A 2 1 7	OFFICE	VINYL ASBESTOS	RUBBER	6'	—	—	—	—	PLASTER	ACOUSTICAL TILE	7'4"	—	—	—	YES	YES	A 2 1 7
A 2 1 8	CUSTODIAN	CONCRETE	RUBBER	6'	—	—	—	—	PLASTER	PLASTER	6'6"	—	—	—	YES	YES	A 2 1 8
A 2 1 9	STORAGE	VINYL ASBESTOS	RUBBER	6'	—	—	—	—	PLASTER	PLASTER	6'6"	—	—	—	YES	YES	A 2 1 9
A 2 2 0	OFFICE	VINYL ASBESTOS	RUBBER	6'	—	—	—	—	PLASTER	ACOUSTICAL TILE	6'6"	—	—	—	YES	YES	A 2 2 0
A 2 2 1	STUDY	VINYL ASBESTOS	RUBBER	6'	—	—	—	—	PLASTER	ACOUSTICAL TILE	7'4"	—	—	—	YES	YES	A 2 2 1
A 2 2 2	OVERSIGHTAL READING	VINYL ASBESTOS	RUBBER	6'	—	—	—	—	PLASTER	ACOUSTICAL TILE	7'4"	—	—	—	YES	YES	A 2 2 2
A 2 2 3	CORRIDOR	TERAZZO	RUBBER	6'	—	—	—	—	PLASTER	ACOUSTICAL TILE	7'4"	—	—	—	YES	YES	A 2 2 3
A 2 2 4	CORRIDOR	TERAZZO	RUBBER	6'	—	—	—	—	PLASTER	ACOUSTICAL TILE	7'4"	—	—	—	YES	YES	A 2 2 4
A 2 2 5	CORRIDOR	TERAZZO	RUBBER	6'	—	—	—	—	PLASTER	ACOUSTICAL TILE	7'4"	—	—	—	YES	YES	A 2 2 5
A 2 2 6	CLASS ROOM	VINYL ASBESTOS	RUBBER	6'	—	—	—	—	PLASTER	ACOUSTICAL TILE	7'4"	—	—	—	YES	YES	A 2 2 6
A 2 2 7	CLASS ROOM	VINYL ASBESTOS	RUBBER	6'	—	—	—	—	PLASTER	ACOUSTICAL TILE	7'4"	—	—	—	YES	YES	A 2 2 7

NUMBER	N A M E	FINISH FLOOR	BASE X Y	HGT. Z	WALL X Y	COATING # R P V	FINISH WALL	CEILING MATERIALS	HGT.	WINDOW SIZES	CELL- MOLD	REMARKS	FABRIC WALL COVERING X Y Z P V	NUMBER
A 226	GIRLS	TERRAZZO	SQUARE TILE	8'	YES	YES	YES	LIGHTWEIGHT BLOCK	GREEN'S CEMENT PLASTER	7'-4"	YES			A 2 2 6
A 229	P.E.P. SPACE	CONCRETE						LIGHTWEIGHT BLOCK	GREEN'S CEMENT PLASTER	7'-4"	YES			A 2 2 9
A 230	BOYS	TERRAZZO	SQUARE TILE	8'	YES	YES	YES	LIGHTWEIGHT BLOCK	GREEN'S CEMENT PLASTER	7'-4"	YES			A 2 3 0
A 231	OFFICE	VINYL ASBESTOS RUBBER	6'				PLASTER	ACOUSTICAL TILE	9'-4"			YES YES YES YES		A 2 3 1
A 234	CUSTODIAN	CONCRETE	RUBBER	6'			PLASTER	PLASTER	9'-0"					A 2 3 2
A 238	STORAGE	VINYL ASBESTOS RUBBER	6'				PLASTER	PLASTER	8'-0"					A 2 3 3
A 241	OFFICE	VINYL ASBESTOS RUBBER	6'					ACOUSTICAL TILE	8'-0"			YES YES YES YES		A 2 3 4
A 235	CLASS ROOM	VINYL ASBESTOS RUBBER	6'				PLASTER	ACOUSTICAL TILE	9'-4"			YES YES YES YES		A 2 3 5
A 236	OFFICE	VINYL ASBESTOS RUBBER	6'				PLASTER	ACOUSTICAL TILE	8'-0"			YES YES YES YES		A 2 3 6
A 237	STORAGE	VINYL ASBESTOS RUBBER	6'				PLASTER	PLASTER	8'-0"					A 2 3 7
A 240	TOILETS													A 2 3 8
A 239	OFFICE	VINYL ASBESTOS RUBBER	6'				PLASTER	ACOUSTICAL TILE	9'-4"			YES YES YES YES		A 2 3 9
A 240	CORRIDOR	TERRAZZO RUBBER	6'				PLASTER	ACOUSTICAL TILE	9'-4"			YES YES YES YES		A 2 4 0
A 241	CLASS ROOM	VINYL ASBESTOS RUBBER	6'					ACOUSTICAL TILE	9'-4"			YES YES YES YES		A 2 4 1
A 242	CLASS ROOM	VINYL ASBESTOS RUBBER	6'				PLASTER	ACOUSTICAL TILE	9'-4"			YES YES YES YES		A 2 4 2
A 243	VESTIBULE	TERRAZZO RUBBER	6'				FACE BRICK	ACOUSTICAL TILE	9'-4"					A 2 4 3
A 244	VESTIBULE	TERRAZZO RUBBER	6'				FACE BRICK	ACOUSTICAL TILE	9'-4"					A 2 4 4
1-A	STAIR	TERRAZZO RUBBER	6'				FACE BRICK	ACOUSTICAL TILE	* 6'-6"			* SEE DETAILS SHEET # G-50		1 A
2-A	STAIR	TERRAZZO RUBBER	6'				FACE BRICK	ACOUSTICAL TILE	*			* SEE DETAILS SHEET # G-50		2 A



	CONCRETE
	CONCRETE BLOCK
	LIGHT WEIGHT BLOCK
	FACE BRICK
	SIDE BRICK
	STONE
	TERRAZZO
	MARBLE
	PLASTER
	WOOD BLOCKING
	FINISHED WOOD
	RAIN PROOF WALL

[illegible]

PLAN OF MASONRY CONDITION AT
WINDOWS DETAIL "A"
(2 FT BELOW WINDOWS) // - SCALE = 1/2" = 1'-0"

EVERETT I. BROWN COMPANY - ARCHITECTS & ENGINEERS
5500 BRADBURY AVENUE —, PARK FLETCHER
INDIANAPOLIS INDIANA
SHEET G-8 OF 68