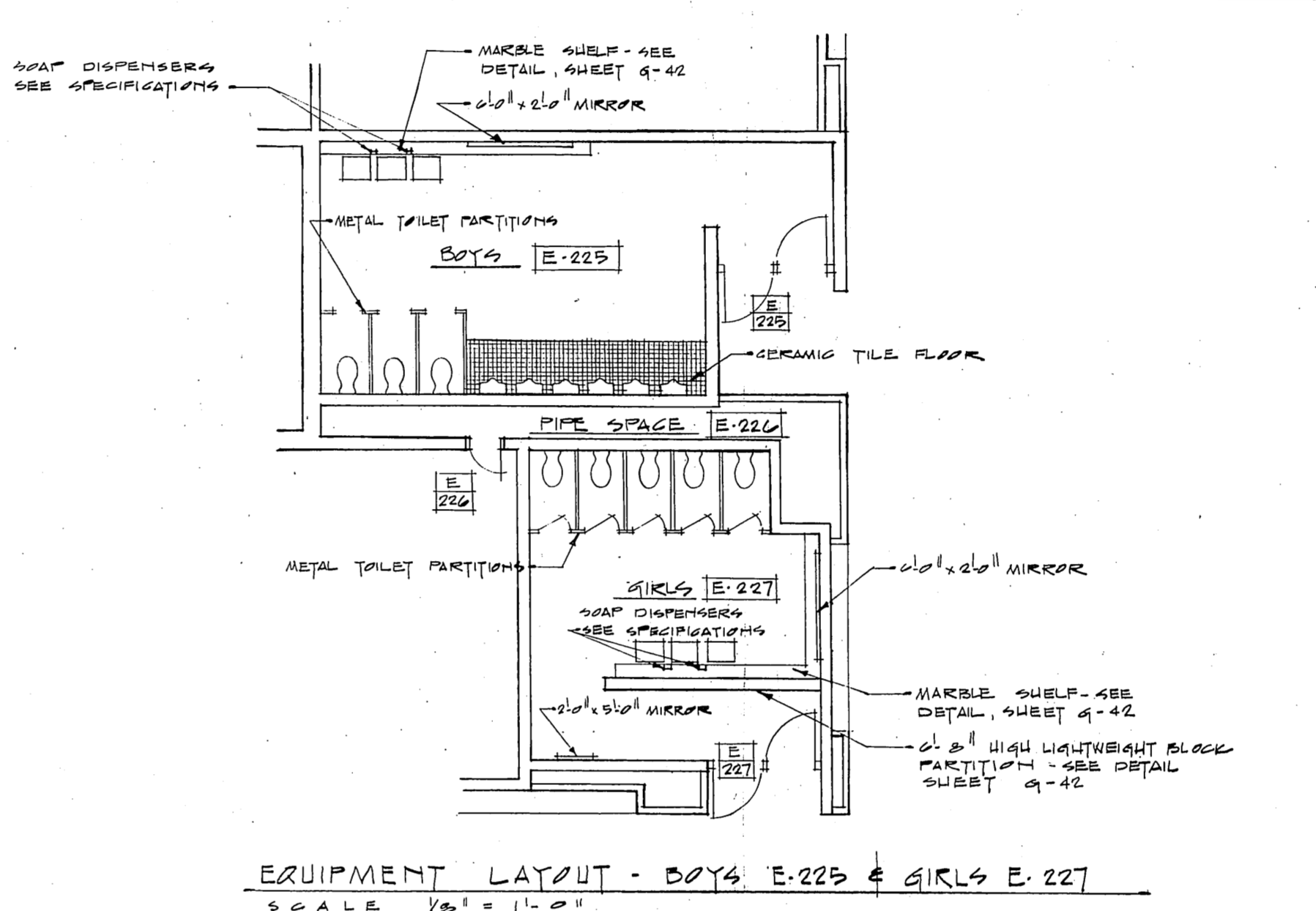


UNIT "E" SECOND FLOOR ROOM FINISH SCHEDULE															
NUMBER	NAME	FINISH FLOOR	BASE	HGT.	WALL	COATING	W	WALL FINISH	CEILING MATERIAL	HGT.	WINDOW	GLASS	REMARKS	FINISH WALL COVERING	NUMBER
E-201	PHYSICAL SCIENCE	VINYL ASBESTOS	RUBBER	6"	PLASTER			PLASTER	ACOUSTICAL TILE	9'-0"	METAL		FAT METAL ENCLOSURE	YES	E-201
E-202	PREPARATION	VINYL ASBESTOS	RUBBER	6"	PLASTER			PLASTER	ACOUSTICAL TILE	9'-0"	METAL		FAT METAL ENCLOSURE	YES	E-202
E-203	PHYSICAL SCIENCE	VINYL ASBESTOS	RUBBER	6"	PLASTER			PLASTER	ACOUSTICAL TILE	9'-0"	METAL		FAT METAL ENCLOSURE	YES	E-203
E-204	BIOLOGY	VINYL ASBESTOS	RUBBER	6"	PLASTER			PLASTER	ACOUSTICAL TILE	9'-0"	METAL		FAT METAL ENCLOSURE	YES	E-204
E-205	PREPARATION	VINYL ASBESTOS	RUBBER	6"	PLASTER			PLASTER	ACOUSTICAL TILE	9'-0"	METAL		FAT METAL ENCLOSURE	YES	E-205
E-206	SCIENCE WAREHOUSE	VINYL ASBESTOS	RUBBER	6"	PLASTER			PLASTER	ACOUSTICAL TILE	9'-0"	METAL		FAT METAL ENCLOSURE	YES	E-206
E-207	PHYSICS	VINYL ASBESTOS	RUBBER	6"	PLASTER			PLASTER	ACOUSTICAL TILE	9'-0"	METAL		FAT METAL ENCLOSURE	YES	E-207
E-208	CORRIDOR	TERRAZZO	RUBBER	6"	PLASTER			PLASTER	ACOUSTICAL TILE	9'-0"	METAL		FAT METAL ENCLOSURE	YES	E-208
E-209	PREPARATION	VINYL ASBESTOS	RUBBER	6"	PLASTER			PLASTER	ACOUSTICAL TILE	9'-0"	METAL		FAT METAL ENCLOSURE	YES	E-209
E-210	PREPARATION	VINYL ASBESTOS	RUBBER	6"	PLASTER			PLASTER	ACOUSTICAL TILE	9'-0"	METAL		FAT METAL ENCLOSURE	YES	E-210
E-211	PREPARATION	VINYL ASBESTOS	RUBBER	6"	PLASTER			PLASTER	ACOUSTICAL TILE	9'-0"	METAL		FAT METAL ENCLOSURE	YES	E-211
E-212	PREPARATION	VINYL ASBESTOS	RUBBER	6"	PLASTER			PLASTER	ACOUSTICAL TILE	9'-0"	METAL		FAT METAL ENCLOSURE	YES	E-212
E-213	QUOTIDIAN	CONCRETE	RUBBER	6"	PLASTER			PLASTER	ACOUSTICAL TILE	9'-0"	METAL		FAT METAL ENCLOSURE	YES	E-213
E-214	ADVANCE DISPLAY	VINYL ASBESTOS	RUBBER	6"	PLASTER			PLASTER	ACOUSTICAL TILE	9'-0"	METAL		FAT METAL ENCLOSURE	YES	E-214
E-215	GREENHOUSE	TERRAZZO	RUBBER	6"	PLASTER			PLASTER	ACOUSTICAL TILE	9'-0"	METAL		FAT METAL ENCLOSURE	YES	E-215
E-216	AUDIO VISUAL STORAGE	VINYL ASBESTOS	RUBBER	6"	PLASTER			PLASTER	ACOUSTICAL TILE	9'-0"	METAL		FAT METAL ENCLOSURE	YES	E-216
E-217	CORRIDOR	TERRAZZO	RUBBER	6"	PLASTER			PLASTER	ACOUSTICAL TILE	9'-0"	METAL		FAT METAL ENCLOSURE	YES	E-217
E-218	BIOLOGY	VINYL ASBESTOS	RUBBER	6"	PLASTER			PLASTER	ACOUSTICAL TILE	9'-0"	METAL		FAT METAL ENCLOSURE	YES	E-218
E-219	CHEMISTRY	VINYL ASBESTOS	RUBBER	6"	PLASTER			PLASTER	ACOUSTICAL TILE	9'-0"	METAL		FAT METAL ENCLOSURE	YES	E-219
E-220	PREPARATION	VINYL ASBESTOS	RUBBER	6"	PLASTER			PLASTER	ACOUSTICAL TILE	9'-0"	METAL		FAT METAL ENCLOSURE	YES	E-220
E-221	PREPARATION	VINYL ASBESTOS	RUBBER	6"	PLASTER			PLASTER	ACOUSTICAL TILE	9'-0"	METAL		FAT METAL ENCLOSURE	YES	E-221
E-222	DARKROOM	VINYL ASBESTOS	RUBBER	6"	PLASTER			PLASTER	ACOUSTICAL TILE	9'-0"	METAL		FAT METAL ENCLOSURE	YES	E-222
E-223	BIOLOGY	VINYL ASBESTOS	RUBBER	6"	PLASTER			PLASTER	ACOUSTICAL TILE	9'-0"	METAL		FAT METAL ENCLOSURE	YES	E-223
E-224	CHEMISTRY	VINYL ASBESTOS	RUBBER	6"	PLASTER			PLASTER	ACOUSTICAL TILE	9'-0"	METAL		FAT METAL ENCLOSURE	YES	E-224
E-225	BOYS	TERRAZZO	CONCRETE	6"	PLASTER			PLASTER	ACOUSTICAL TILE	9'-0"	METAL		FAT METAL ENCLOSURE	YES	E-225
E-226	BOYS SPACE	CONCRETE	CONCRETE	6"	PLASTER			PLASTER	ACOUSTICAL TILE	9'-0"	METAL		FAT METAL ENCLOSURE	YES	E-226
E-227	GIRLS	TERRAZZO	CONCRETE	6"	PLASTER			PLASTER	ACOUSTICAL TILE	9'-0"	METAL		FAT METAL ENCLOSURE	YES	E-227
E-228	MECHANICAL EQUIPMENT	CONCRETE	RUBBER	6"	PLASTER			PLASTER	ACOUSTICAL TILE	9'-0"	METAL		FAT METAL ENCLOSURE	YES	E-228
E-229	ELEVATOR	CONCRETE	RUBBER	6"	PLASTER			PLASTER	ACOUSTICAL TILE	9'-0"	METAL		FAT METAL ENCLOSURE	YES	E-229
E-230	CORRIDOR	TERRAZZO	RUBBER	6"	PLASTER			PLASTER	ACOUSTICAL TILE	9'-0"	METAL		FAT METAL ENCLOSURE	YES	E-230
E-231	QUOTIDIAN	CONCRETE	RUBBER	6"	PLASTER			PLASTER	ACOUSTICAL TILE	9'-0"	METAL		FAT METAL ENCLOSURE	YES	E-231
E-232	STORAGE & PREPARATION	VINYL ASBESTOS	RUBBER	6"	PLASTER			PLASTER	ACOUSTICAL TILE	9'-0"	METAL		FAT METAL ENCLOSURE	YES	E-232
E-2	STAIR	TERRAZZO	RUBBER	6"	PLASTER			PLASTER	ACOUSTICAL TILE	9'-0"	METAL		FAT METAL ENCLOSURE	YES	E-2
E-3	STAIR	TERRAZZO	RUBBER	6"	PLASTER			PLASTER	ACOUSTICAL TILE	9'-0"	METAL		FAT METAL ENCLOSURE	YES	E-3



- UNIT "E" SECOND FLOOR PLAN NOTES**
- E-1 PROVIDE 1/2" WOOD BLOCKING ABOVE SILLING FOR PREVENTION GREEN ANGLE. DETAIL IN SILLING TO BE AS SHOWN ON THE DRAWINGS AND AS DIRECTED BY THE ARCHITECT. SEE DETAIL SHEET A-42.
 - E-2 PROVIDE 1/2" DEEP WOOD SHIMMING 3" SQUARE HIGH SHIMMING TO BE 3/4" RED OAK PLYWOOD WITH 1/4" WOOD BLOCKING BEHIND. DETAIL SHEET TO BE AS SHOWN ABOVE PLAN AND 1/4" O.C. VERTICAL THEREAFTER. SHIMMING TO BE AT WALL AND 4" FROM END.
 - E-3 GENERAL CONTRACTOR TO PROVIDE FINISH SUBSTRATE SUPPORT LOCATION TO BE AS SHOWN ON THE PLAN AND AS DIRECTED BY THE ARCHITECT. SEE DETAIL SHEET A-42.
 - E-4 PROVIDE A 2" x 1/2" STEEL IN METAL LATH & PLASTER WALL FOR RETURN AIR FLOW BY MECHANICAL CONTRACTOR. USE OF STEELING TO BE AT 1/2" ABOVE FINISH FLOOR.
 - E-5 PROVIDE A METAL LATH AND PLASTER BACKUP AT 1/2" ABOVE FINISH FLOOR. SEE DETAIL SHEET A-42.
 - E-6 PROVIDE HARD BOUND COMMON BRICK BACKUP AT ALL WINDOWS. EXTEND BRICK 1/2" BEHIND EACH WINDOW JAMB & TYPED INTO LIGHTWEIGHT BLOCK A MINIMUM OF 6" SEE DETAIL 1A1 SHEET A-42.

