

GENERAL NOTES

1. ALL WORK SHOWN ON SHEETS G-1, G-2 & G-3 IS IN ALTERNATE G-1 TO DIVISION I UNLESS OTHERWISE SPECIFICALLY NOTED OR DRAWINGS OR INCLUDED IN ONE OF THE FOLLOWING:
 - (a) STORM & SANITARY DRAINAGE INCLUDING MANHOLES ARE IN ALTERNATE G-1 TO DIVISION I.
 - (b) CATCH BASINS, HEADWALLS AND CULVERT PIPES ARE IN ALTERNATE G-1 TO DIVISION I. THE 48" STEEL DRAINAGE PIPE IS IN ALTERNATE G-1 TO DIVISION I.
 - (c) THE ALL-WEATHER TRACED WITH ATTENDANT CHANNELS, INCLUDING AN ADDITIONAL CATCH BASIN ARE IN ALTERNATE G-1 TO DIVISION I. SEE SPECIFICATIONS AND GENERAL PLANS, SHEET G-1.
 - (d) THE BLENDED CONCRETE CONCRETE WALKWAY IS CHANGED TO SIDEWALK ON SOUTH SIDE OF BALDWIN'S WITH THE UNDER DRIVEWAY CONNECTS TO STREET LEVEL AS IN ALTERNATE G-1 TO DIVISION I.
 - (e) THE CONCRETE WALKWAYS SHOWN ON EAST, NORTH & WEST SIDES OF BALDWIN'S ARE PART OF ALTERNATE G-4 TO DIVISION I.
 - (f) THE CURB PLATFORM SHOWN SOUTH SIDE OF SOUTH DRIVEWAY IS IN ALTERNATE G-1 TO DIVISION I. THE 4" ASP. CONCRETE PLATFORM SHOWN IN DRIVEWAY PAVING WILL BE IN ALT. G-1 & SHALL FOLLOW GRADES SHOWN FOR DRIVE.
2. GRADING, CURBS & SIDEWALKS:
 - (a) FINISH GRADES THE ENTIRE SITE, GRADES TO BE RUN IN SMOOTH PARABOLIC CURVES BETWEEN FINISH ELEVATIONS SHOWN. (B) TOP GRADES TO BE PARALLEL TO ALL BARRIERS WITH A 2% SLOPE AWAY FROM THE CURB (SEE SPECIFICATIONS). SEE ALSO THE 20' SIDEWALK SPECIFICATIONS ABOUT SHEET G-1.
 - (b) THE 20' SIDEWALKS SHALL BE IN ALTERNATE G-1 TO DIVISION I.
 - (c) ALL GRADED AREAS NOT INCLUDED IN E(1) ABOVE SHALL BE SLOPED AS SET FORTH IN SPECIFICATIONS.
 - (d) REPAIRS TO EXISTING DITCH ALONG SOUTH SIDE OF 38th STREET AS INDICATED TO FLOW INTO EXISTING DITCH AT AN EXISTING HEADWALL & CULVERT PIPE NEAR NORTHEAST CORNER OF PROPERTY.
3. CURBS:
 - (a) RADIUS SHOWN ABOUT CURBS ARE IN ALL INSTANCES GIVEN TO THE PAVED CURBS, AS ARE PRINCIPAL DIMENSIONS. (B) MAINTAIN A NORMAL CURB HEIGHT OF 6" FOR ALL CURBS EXCEPT WHERE SPECIFIC ELEVATIONS SHOWN INDICATE A VARIATION THEREOF OR AS REQUIRED BY (3) BELOW.
 - (b) NON-CIRCULAR CURBS SHALL BE TAPERED WHEN SO INDICATED, FROM NORMAL 6" HEIGHT TO AN ENDING HEIGHT OF 3" IN THE ENDING 3' OF SUCH CURBS.
 - (c) CURBS ISLANDS SHOWN IN DRIVEWAY APPROACHES FROM E. 38th STREET ARE TO BE RADIUS END CONCRETE PLATFORMS RAISED A CURBED 6" ABOVE SURROUNDING CONCRETE PAVING. PROVIDE 1/2" EXPANSION JOINTS ENTIRELY AROUND EACH ISLAND.
4. REMOVE ALL PAVED DRIVEWAYS PRESENTLY EXISTING ON THE PROPERTY, TOTALING APPROXIMATELY 2500' LINEAL. THE 20' SIDEWALKS SHOWN HEREON SHALL BE CONCRETE PAVING WITH THE 20' SIDEWALKS MARKED HEREON.
5. ALL STORM SEWERS 18" DIAMETER AND SMALLER SHALL BE VITRIFIED PIPE.
6. ALL STORM SEWERS 18" DIAMETER AND LARGER SHALL BE CONCRETE PIPE.

LEGEND

- EXISTING CONTOUR ——— 848
- FINISH CONTOUR ——— 849
- EXISTING ELEVATION ——— 847.15
- INTERPOLATED ELEVATION ——— 847.25
- FINISH ELEVATION ——— 847.50
- VALLEY LINE ———
- STORM SEWER LINE (WITH MANHOLE) ———
- CATCH BASIN (WITH DRAINAGE AREA) ———
- CHAIN LINK FENCE (WITH GATE) ———
- UTILITY POLE (EXISTING) ———
- CONCRETE WALKWAY (ON OTHER CONCRETE PAVING) ———
- CONCRETE CURB ———
- BITUMINOUS PAVING (ALSO UNDER TRACK) ———

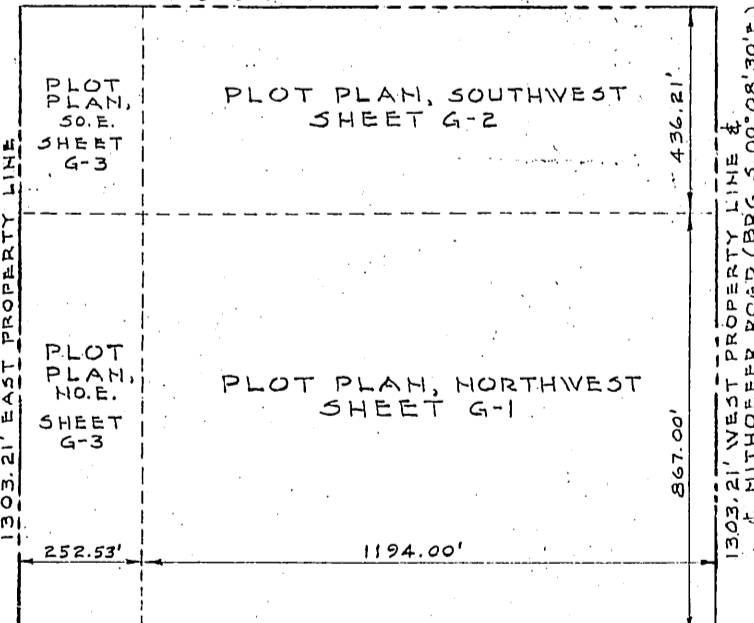
SECTION CUT (THRU LAST 3' ABOVE)

TEST HOLE LOCATION T.H.#7

FIELD TILE UNDERDRAINS

SEWER PIPE SCHEDULE

TYPE	UNDER PAVED AREAS	OTHER AREAS
VITRIFIED	C-10	C-15
CONCRETE	C-16	EXTRA STRENGTH
CONCRETE LARGER THAN 24"	C-76	C-76
	CLASS II	CLASS II



PLOT PLANS SHEET INDEX & TOTAL PLOT
SCALE: 1" = 300.00'

PLOT PLAN, NORTHWEST
SCALE: 1" = 300.00'